

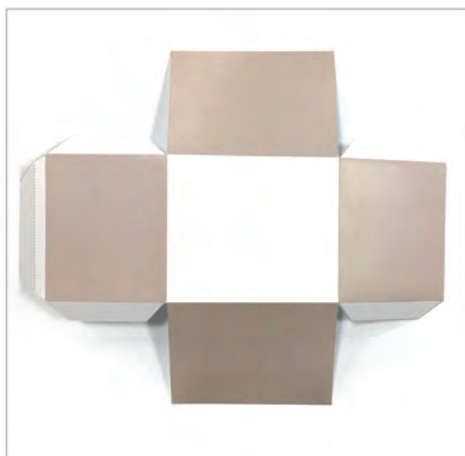
Wuvley Easter Basket Activity

xxx♥

Things you will need:

Printer, scissors, double sided tape or glue and adults help

How to make:



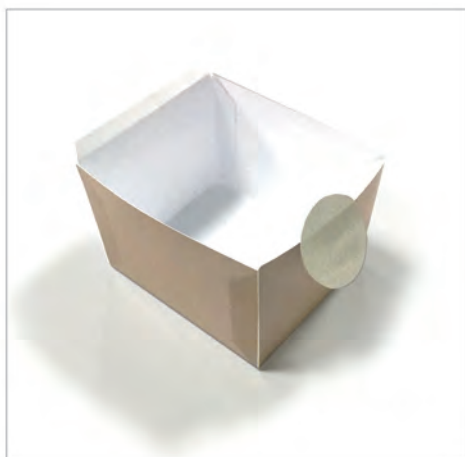
Print the artwork onto an A4 piece of paper. Cut the box out and fold the tabs.



Fold and glue the side tabs to create your basket. The tab on top is for Wuvleys head, fold the tab forward and crease on the dotted line also.



Glue the front paws to the bottom front of the basket.



Fold the tab in half and use to stick the tail on the back so it pops out a bit.



Glue Wuvleys head to the front tab, about half way. Finally glue the handle in place on the inside of the basket.

*Please note, this basket will only fit small eggs in. It's 55mm wide x 65mm long x 45mm high.



Fold along dotted line as well as along the edge of the basket

Fold this tab forward and glue head on the front (glue goes on the reverse of this side)

Fold and glue side tabs to create your basket

This becomes the handle

Fold this tab in half and use to stick the tail on the back so it 'pops' out a bit

Glue front paws to the bottom front of the basket

